



Multinational
Logistics
Partnership

Management company



Class A Warehouse Complex Tomilino

6 km from Moscow Ring Road along Novoryazanskoe highway (M5)



Warehouse Complex Tomilino: large class A facility in the south-east of Moscow Region



Warehouse Complex Tomilino: facility description



--- FACILITY AREA ---

85 200 sq.m - total area

77 000 sq.m - warehouse premises

8 200 sq.m - office premises



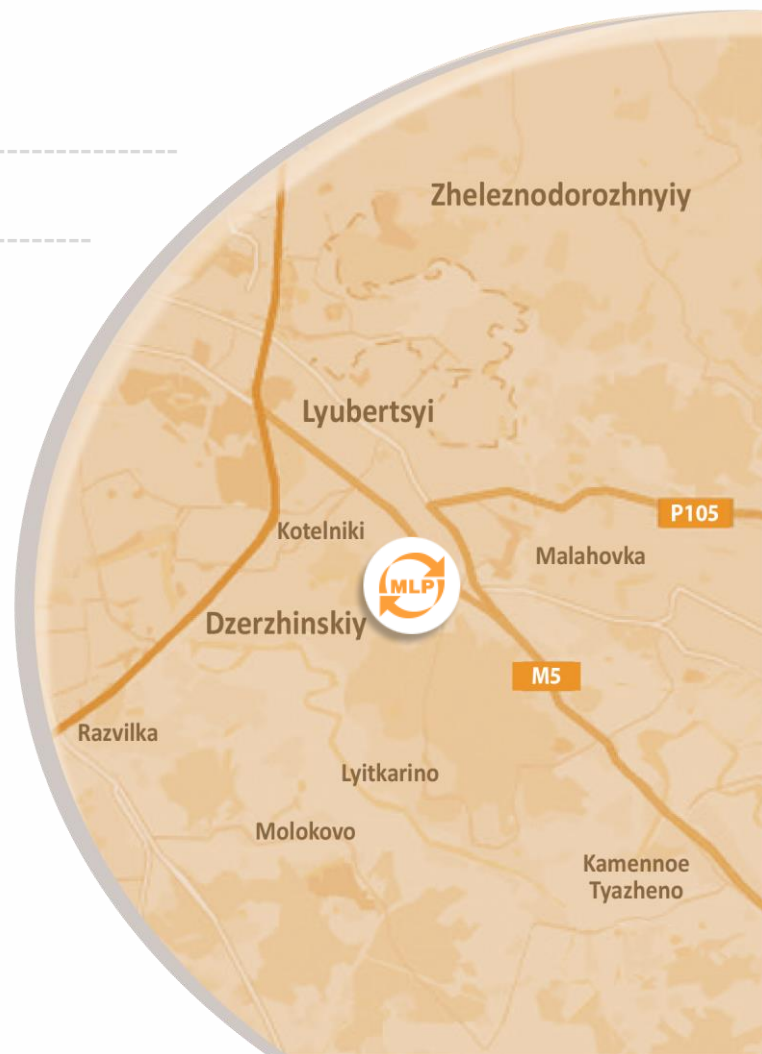
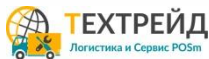
--- LOCATION ---

6 km from Moscow Ring Road along
Novoryazanskoe highway (M5)

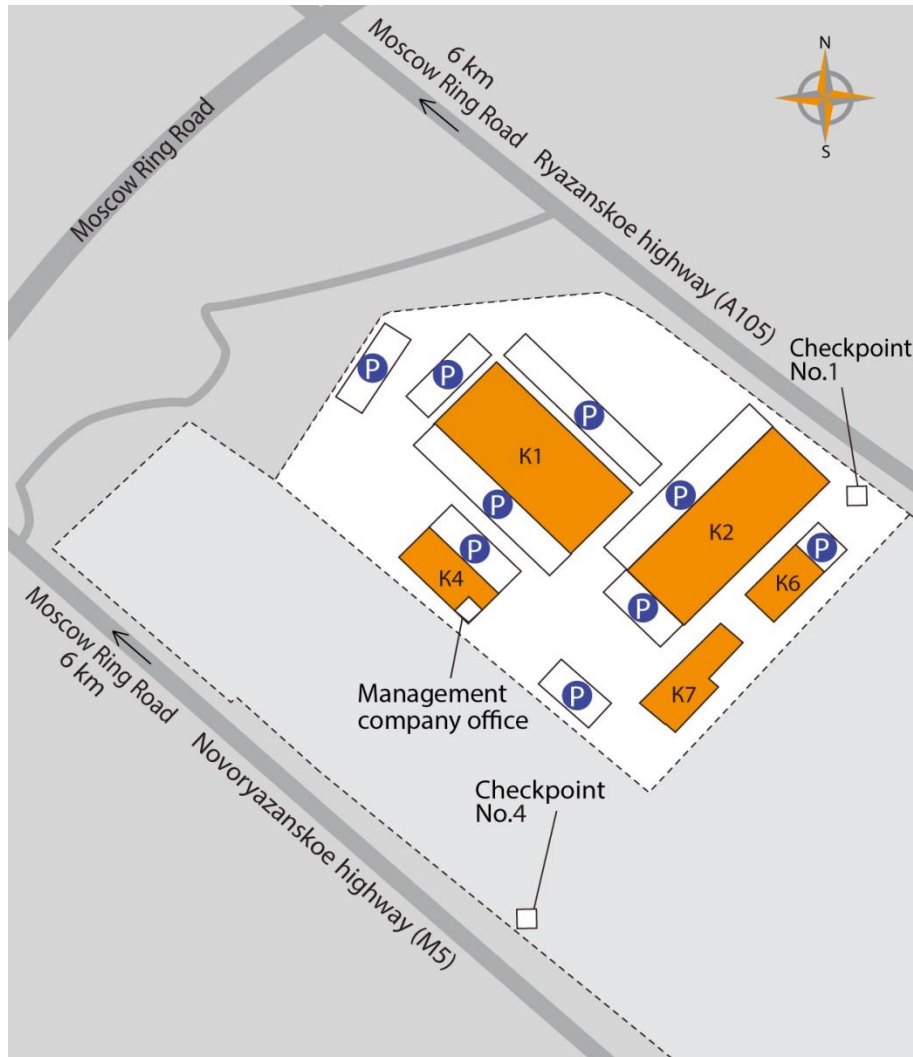
14 km from route A 107 (Betonka)



--- TENANTS ---



Warehouse Complex Tomilino: facility plan



Warehouse Complex Tomilino: modern multifunctional logistics facility



Warehouse Complex Tomilino managed by the market leader



--- Management company MLP ---

1.8 million sq.m - total area of class A warehouses

8 operating class A warehouse facilities

1.5 million sq.m - **6 facilities** - Moscow region

209.600 sq.m - **1 facility** - the city of Saint-Petersburg

40.5 ha - land bank



--- Key success criteria ---

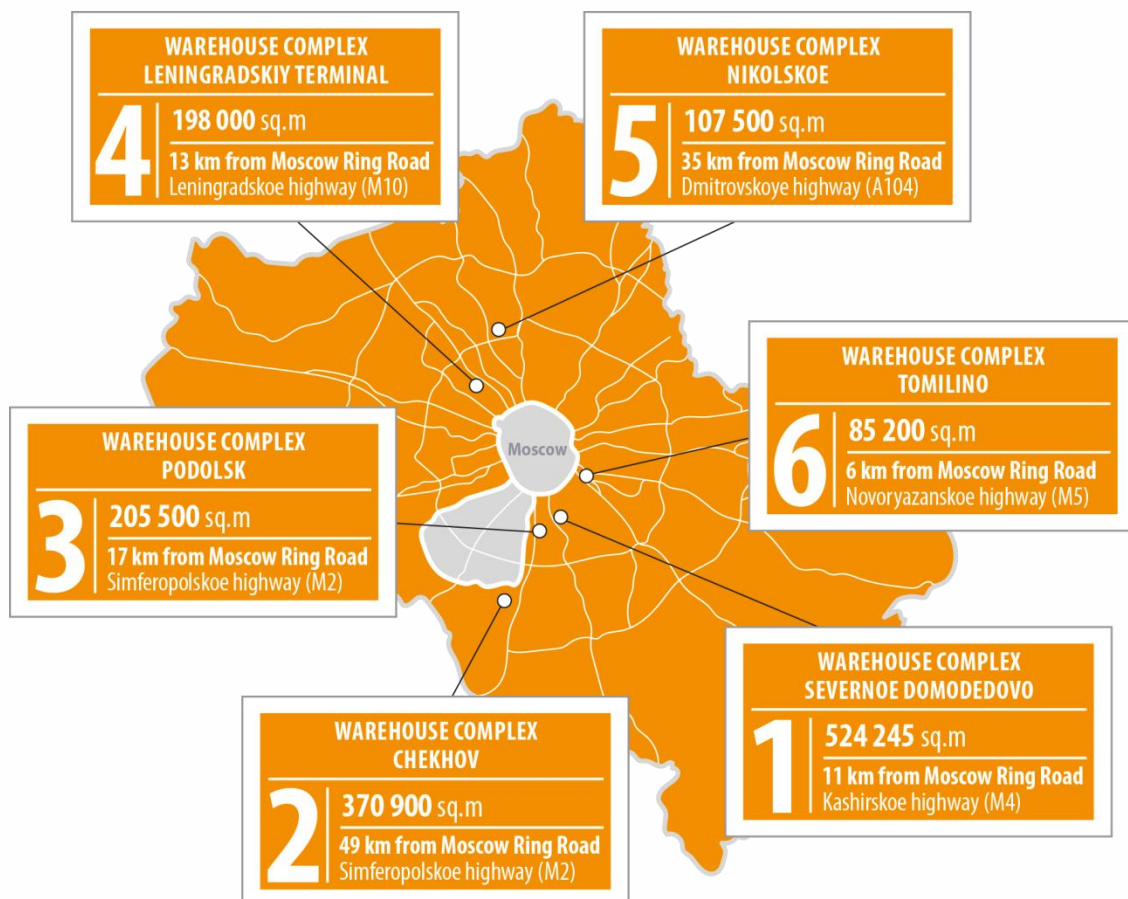
Effective commercial division

Own technical operation department

Quality service 24x7



8 % of the market of warehouse property of Moscow region



1.5 million sq.m (82% of the total storage space of MLP Management Company) are located in the Moscow region





www.mlprussia.com

+7 (495) 644-0-777