



Class A Warehouse Complex Severnoe Domodedovo

11 km from Moscow Ring Road along Kashirskoe highway (M4)



Warehouse Complex Severnoe Domodedovo: the largest class A facility in Russia



Warehouse Complex Severnoe Domodedovo: facility description



Multinational
Logistics
Partnership



--- FACILITY AREA ---

524 000 sq.m - total area

437 800 sq.m - warehouse premises

45 000 sq.m - mezzanine

41 200 sq.m - office premises



--- LOCATION ---

11 km from Moscow Ring Road along
Kashirskoe highway (M4)

19 km from route A 107 (Betonka)

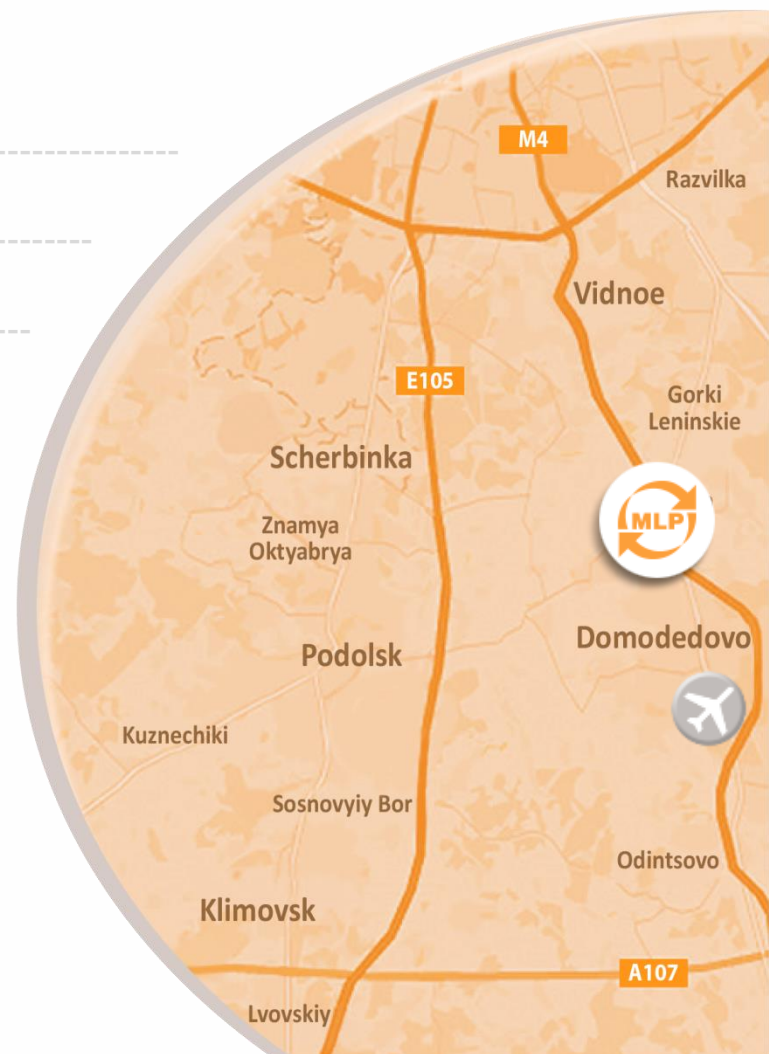
10 km from Domodedovo airport



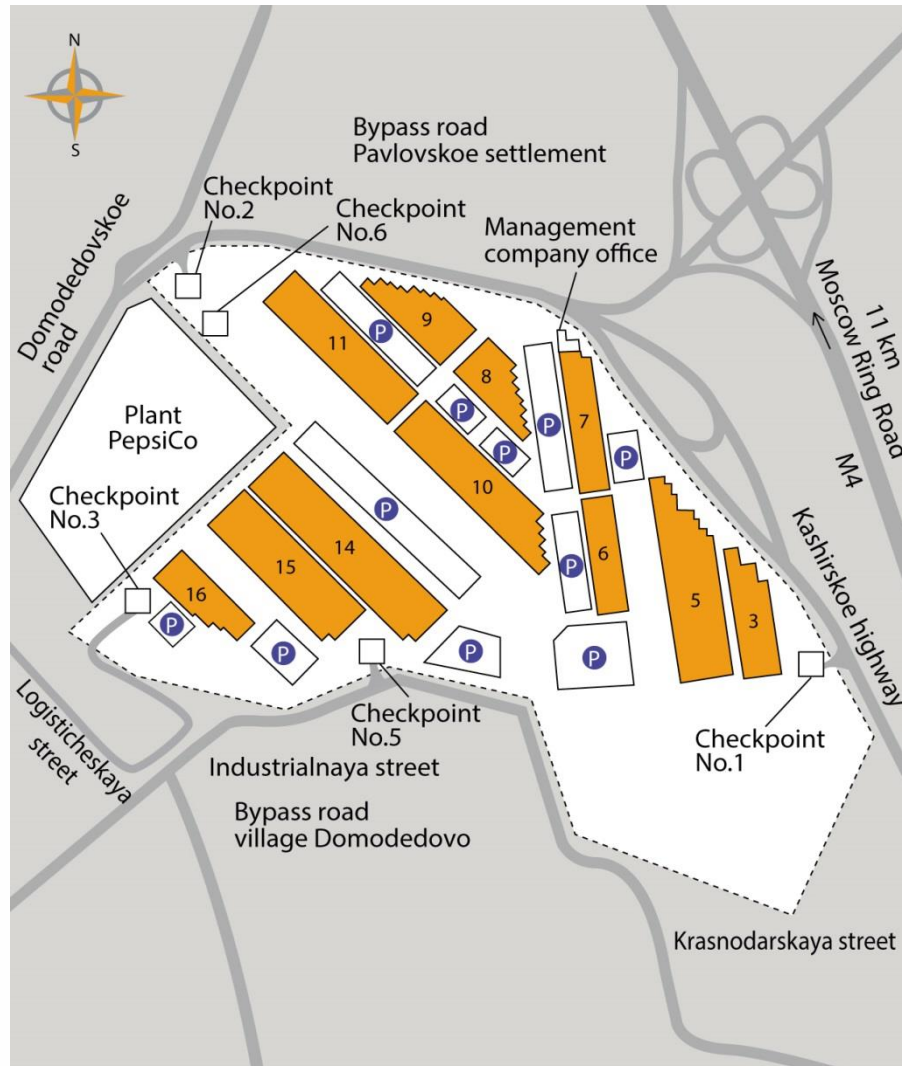
--- TENANTS ---

 IRON MOUNTAIN®  BRIDGESTONE  FABERLIC

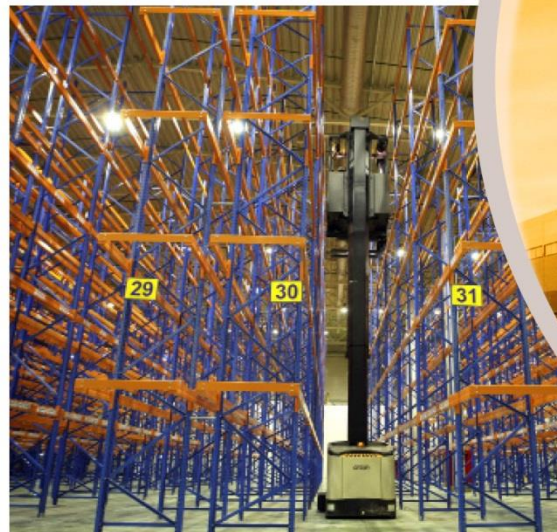
 Байкал Сервис®  Hoff  20/24  NCP LOGISTIC



Warehouse Complex Severnoe Domodedovo: facility plan



Warehouse Complex Severnoe Domodedovo: modern multifunctional logistics facility



Warehouse Complex Severnoe Domodedovo managed by the market leader



--- Management company MLP ---

1.8 million sq.m - total area of class A warehouses

8 operating class A warehouse facilities

1.5 million sq.m - **6 facilities** - Moscow region

209.600 sq.m - **1 facility** - the city of Saint-Petersburg

40.5 ha - land bank



--- Key success criteria ---

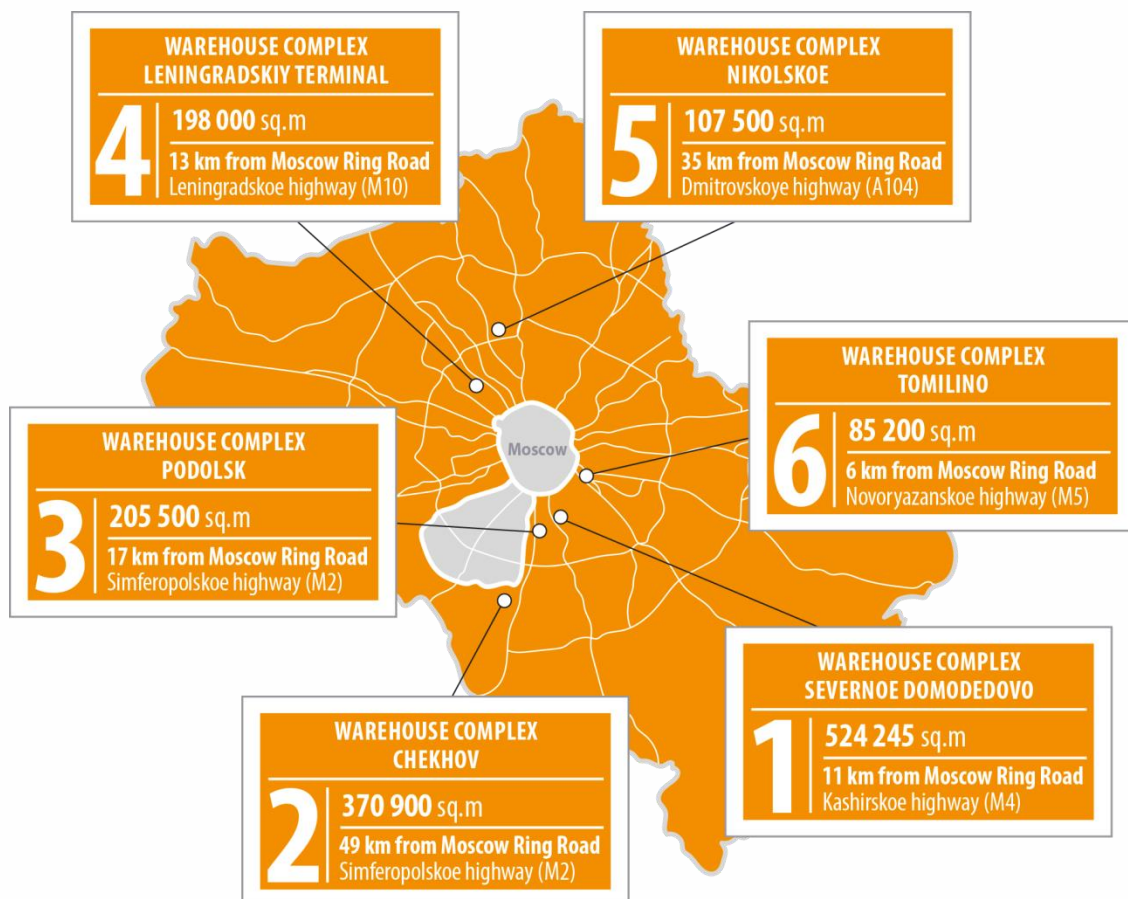
Effective commercial division

Own technical operation department

Quality service 24x7



8 % of the market of warehouse property of Moscow region



1.5 million sq.m (82% of the total storage space of MLP Management Company) are located in the Moscow region



www.mlprussia.com

+7 (495) 644-0-777